

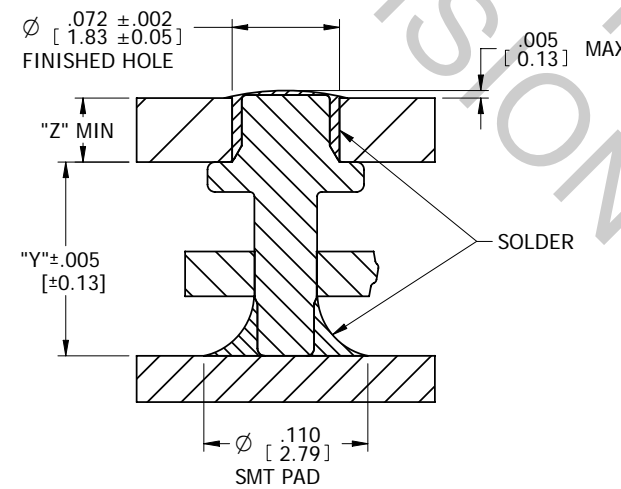
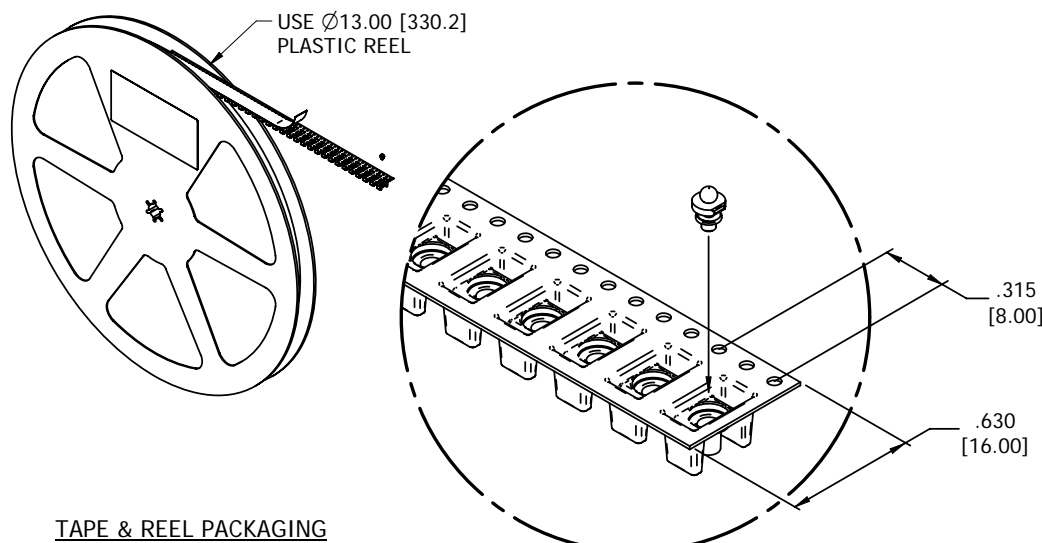
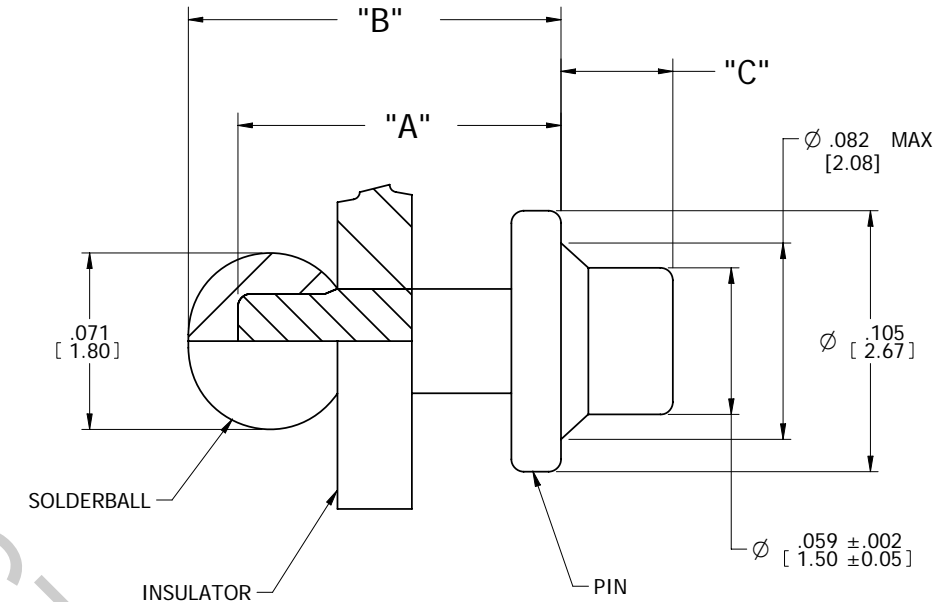
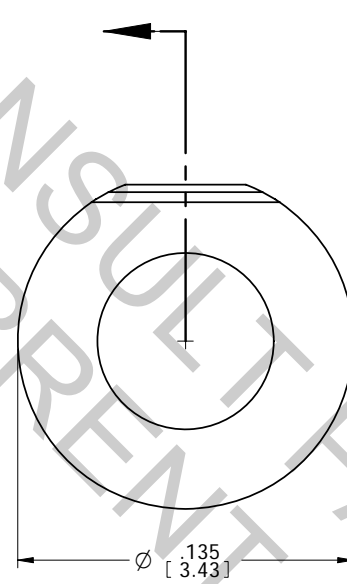
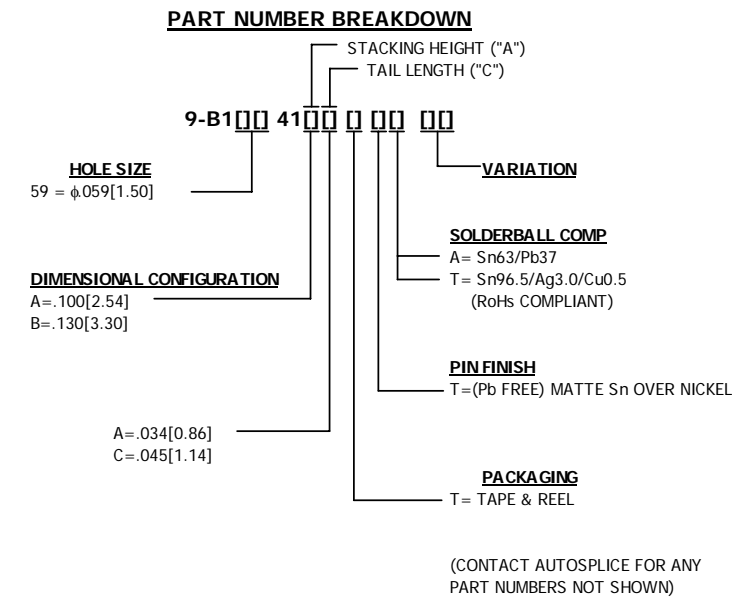
NOTES: UNLESS OTHERWISE SPECIFIED

- 1) INTERPRET DRAWING IN ACCORDANCE WITH ASME Y14.5M -1994
- 2) PARTS TO BE PACKAGED IN TAPE & REEL PER EIA STD-481
- 3) MATERIALS: PIN= COPPER; INSULATOR= FR-4 GLASS EPOXY; SOLDERBALL MATERIAL= SnPb (BLACK) & Pb FREE (BLUE)
- 4) RECOMMENDED PICK HEIGHT: .025 [0.64] FROM TOP OF POCKET
- 5) SOLDERABILITY PER IPC/EIA J-STD-002, TEST A, CATEGORY 3
- 6) PREPROCESSED COPPER PIN TO BE PLATED WITH .000300"- .000500" [0.0076-0.0127] THICK MATTE Sn (Pb FREE) OVER .000100"- .000200" [0.0025-0.0051] Ni, INSPECTED PER AUTOSPICE WORK INSTRUCTION 4.10-14 REV 'A'.

PART NUMBER LIST

PART NUMBER	"A"	"B"	"C"	"Y"	"Z"	INSULATOR COLOR	QTY/REEL
9-B15941AATTA	.100 [2.54]	.120±.007 [3.05±0.18]	.034±.003 [0.86±0.05]	.105 [2.67]	.032 [0.81]	BLACK	1800±15%
9-B15941AATTT	.100 [2.54]	.120±.007 [3.05±0.18]	.034±.003 [0.86±0.05]	.105 [2.67]	.032 [0.81]	BLUE	1800±15%
9-B15941BCTTT	.130 [3.30]	.150±.007 [3.81±0.18]	.045±.003 [1.14±0.05]	.135 [3.43]	.038 [0.97]	BLUE	1500±15%

REV	REVISION RECORD	ECN	BY	APVD	DATE
A	INITIAL RELEASE	505124	HR	PVB	01/23/07
B	CHANGE PLATING PER EWR106140	505527	HR	PVB	09/04/08
C	CHANGE PER EWR106356	505682	DJA	HR	01/30/09
D	ADD PLATING NOTE EWR106568	505810	RJB	PVB	07/10/09



CUSTOMER DRAWING

The drawing and the information set forth herein are the property of AutosplICE, Inc. and are to be held in trust and confidence. Publication, disclosure, or use for any purpose not expressly authorizing in writing by AutosplICE, Inc. is prohibited.

TOLERANCES UNLESS OTHERWISE SPECIFIED DIMENSIONS IN INCHES (mm)		AutosplICE, Inc. 10121 Barnes Canyon Rd. San Diego, CA 92121-2725 858-533-0077	
DECIMAL: .XX = ± .01 [X.X] = ± [0.3] .XXX = ± .005 [X.XX] = ± [0.13]	THIRD ANGLE PROJECTION	DATE: 9/24/07	DATE: 9/24/07
ANGULAR: ± 5°	DRAWN BY: H.R.	ENGINEERED BY: H. REYNOLDS	REVISION: D
◇ DENOTES SPECIAL CHARACTERISTIC	SCALE: 20:1	SIZE: C	MODEL NO: C9-B15941